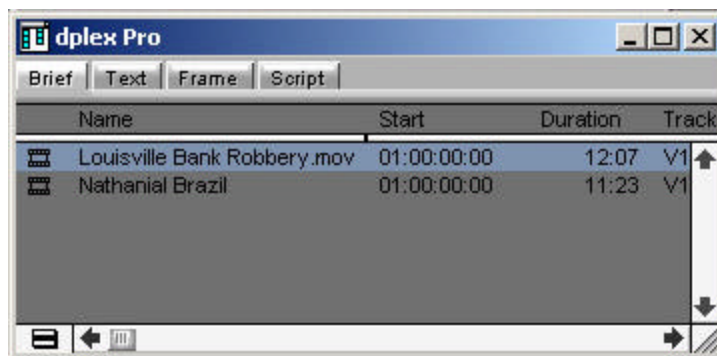


## “Send To” Function

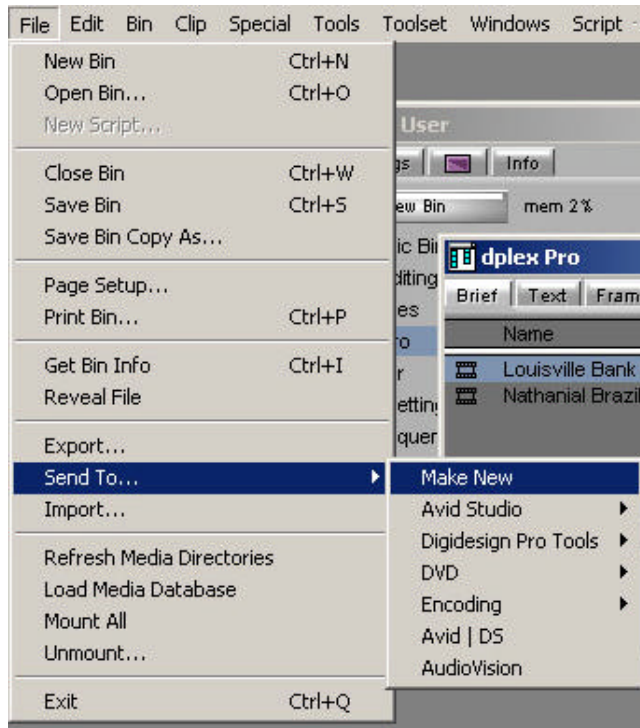
With either Avid Xpress Pro or Media Composer, you will have the option to use the “send to” function to send a clip or a sequence directly to another program. The send to option will also automatically open the program you have chosen. This option may be particularly useful when exporting files to dPlex Pro.

The send to function only works from within the bin. If you do not wish to export the entire sequence or clip, place your in and out marks before closing the clip and choosing the send to option. Follow the steps below:

- Highlight the clip or sequence you wish to export (remember to use in and out marks if you don't wish to export the entire file).

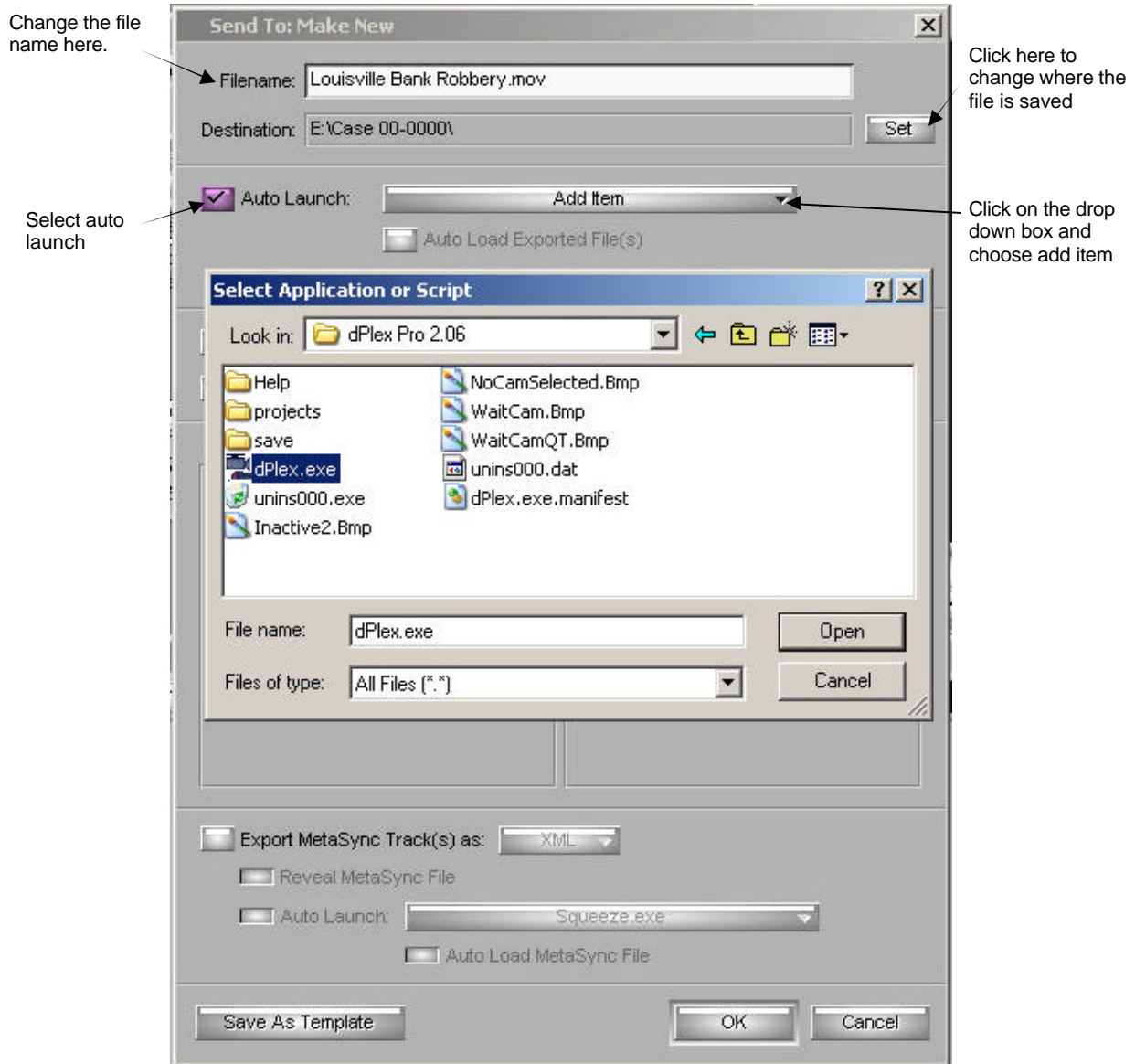


- Go to File> Send To > Make New



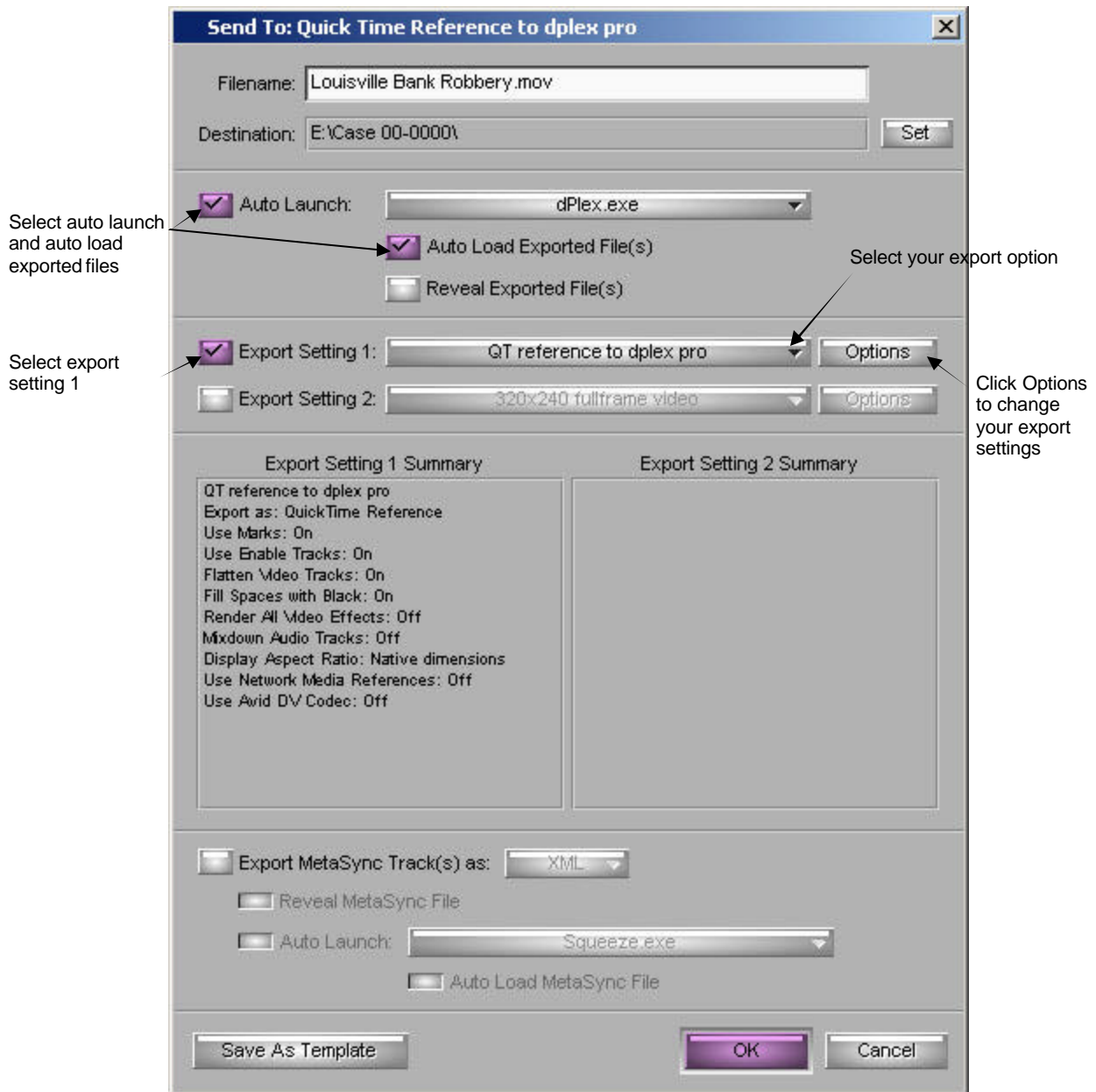
## “Send To” Function

- In the Send To dialog box, choose the drop down box next to the auto launch button (see diagram below) and select add item.
- Change your filename by typing in the text box
- Change the location for your exported file by clicking on set.
- Select the application you wish to send your file to. For example, if you want to send your media to dPlex Pro, go to C:\Program Files\Ocean Systems\dPlex Pro 2.06\ and select the executable file dPlex.exe



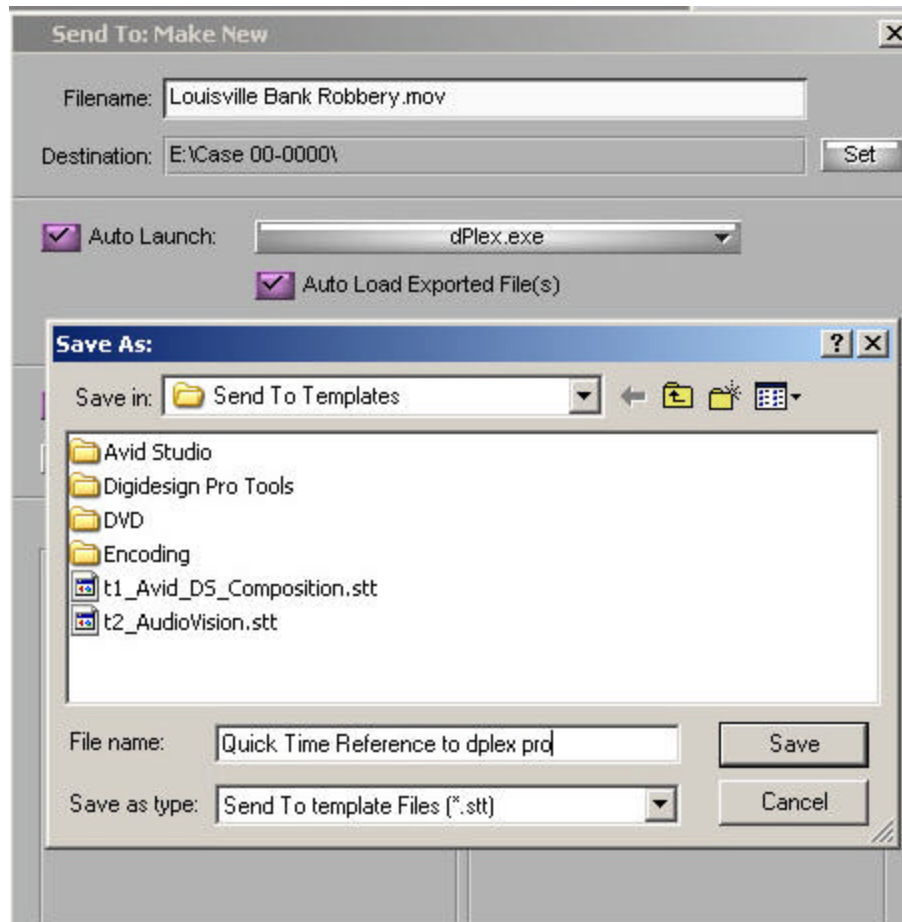
## “Send To” Function

- Select Auto Launch and Auto Load Exported File(s) This will allow the file to open automatically in the selected program.
- Next, choose export setting 1 and in the drop down box select your export option. If you do not have an export option available, click on any one and check the options button to change the settings.
- Once you have selected the appropriate settings (see modules for appropriate settings for different file types), Click Save As Template.



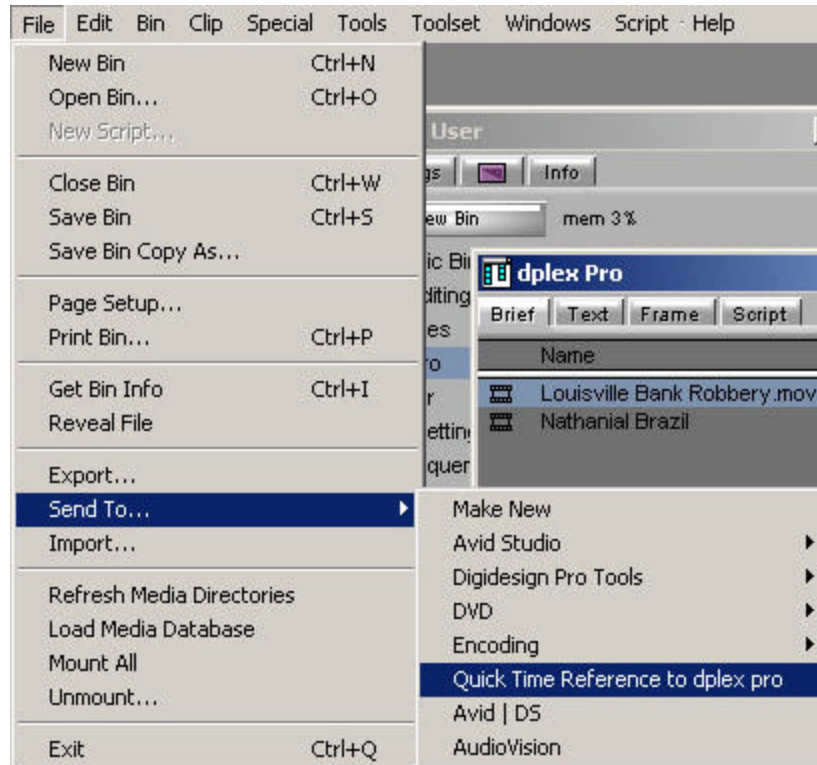
## “Send To” Function

- Choose a name for your template and click Save.
- Finally click “OK” and your file will be exported from Avid and will automatically open in the program you have selected.



## “Send To” Function

- Choose a name for your template and click Save.
- Finally click “OK” and your file will be exported from Avid and will automatically open in the program you have selected.
- If you saved your settings as a template, you will be able to select that option from the send to menu without having to make any changes to the settings (see below).



### NOTE:

- The send to option works directly from the bin—you will not be able to choose send to if you clip is open in a pop-up monitor or loaded in the composer window.
- This function does not work if you are exporting sequential files for auto launch. You will be able to export the files, but they will not automatically open in another program.