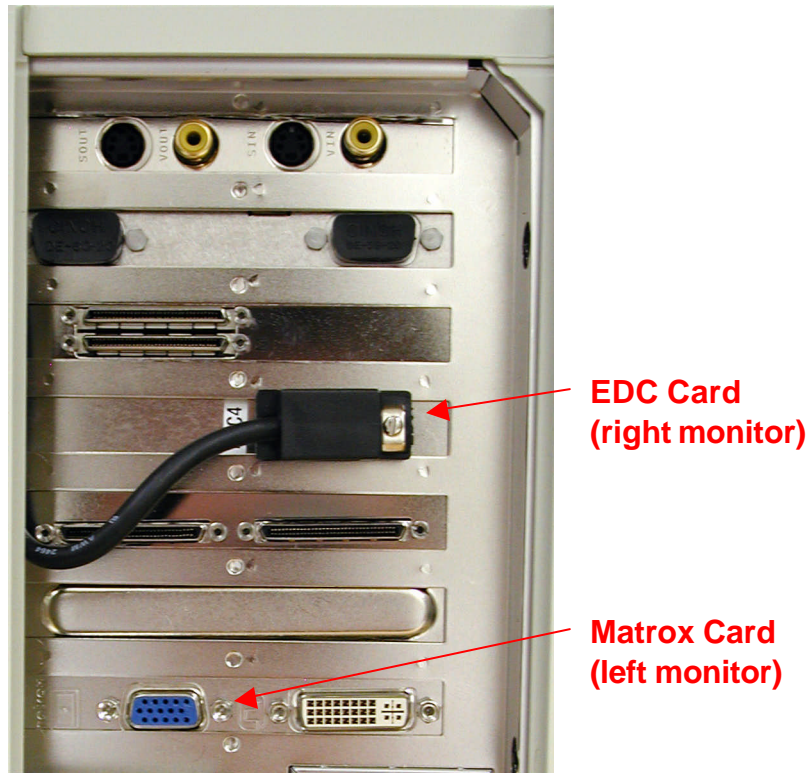


Dual Monitor Setup

Here are some general notes on setting up dual display monitors. There are a few basic configurations out there. Please follow the appropriate setup for your system.

Note: When physically connecting your monitors. Please connect the monitor that you wish to have on the left hand side to the Matrox card. The monitor you wish to have on the right hand side to the EDC card.



The EDC card is labeled “EDC 4” and is the default connection for a single monitor. The Matrox card is labeled “Video 2” and is used to connect a second monitor.

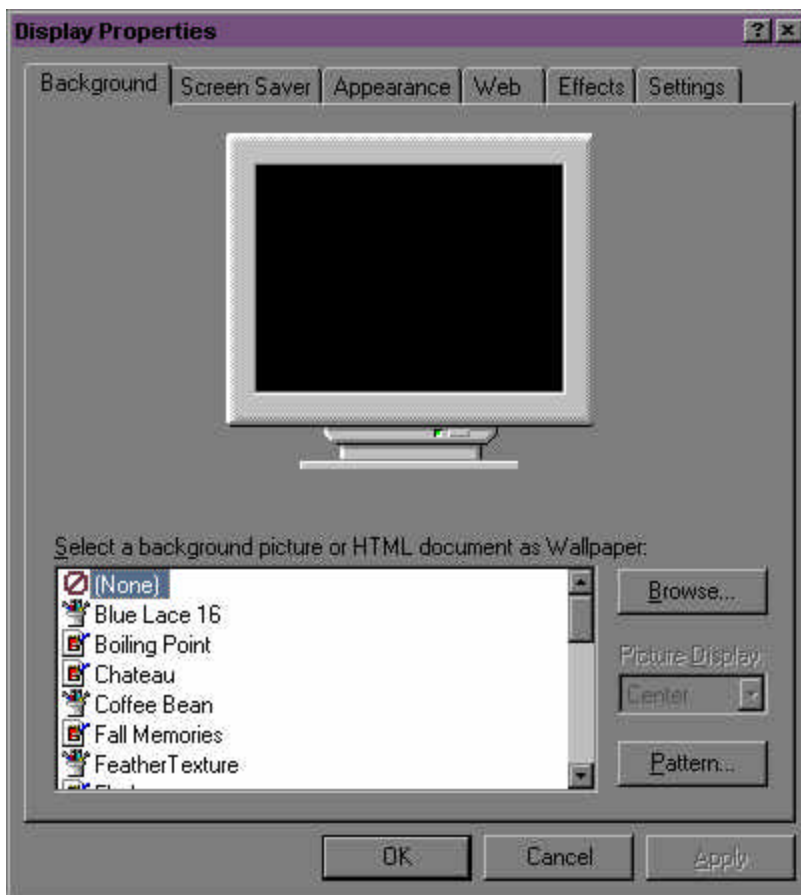
If wish to set up dual monitor support please follow the steps below.

1. Close out any applications that are open.
2. Right click on your desktop and select the Properties option on the sub-menu. This should open up a window with Display Properties in the title bar.



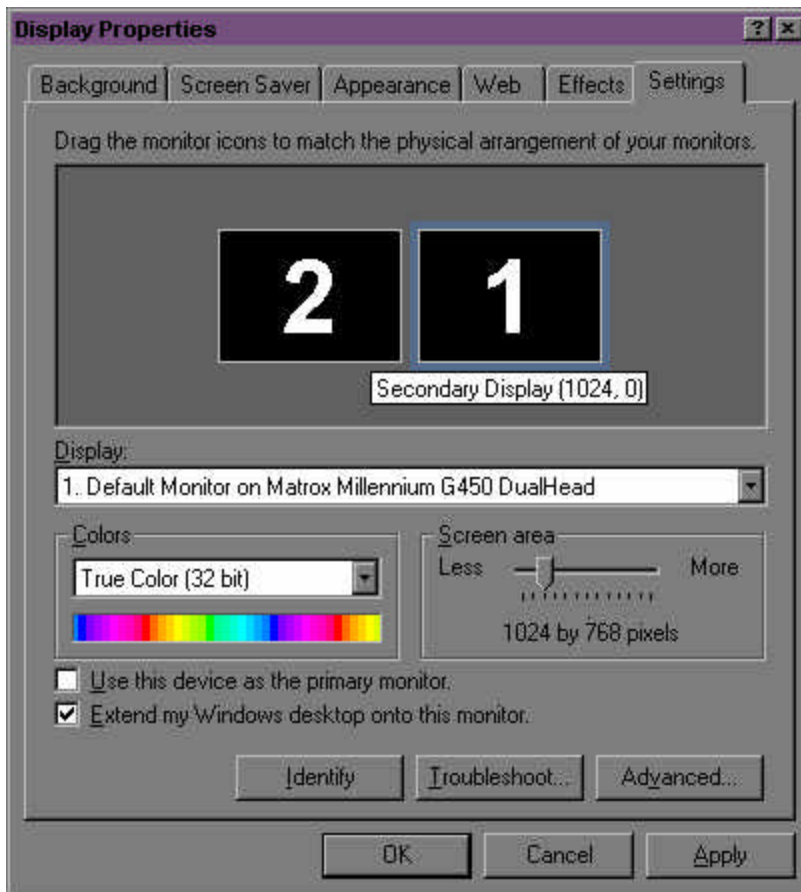
Opening the Display Properties.

3. By default it will open to the Background tab, select the Settings tab which is on the far right side of the tabs.



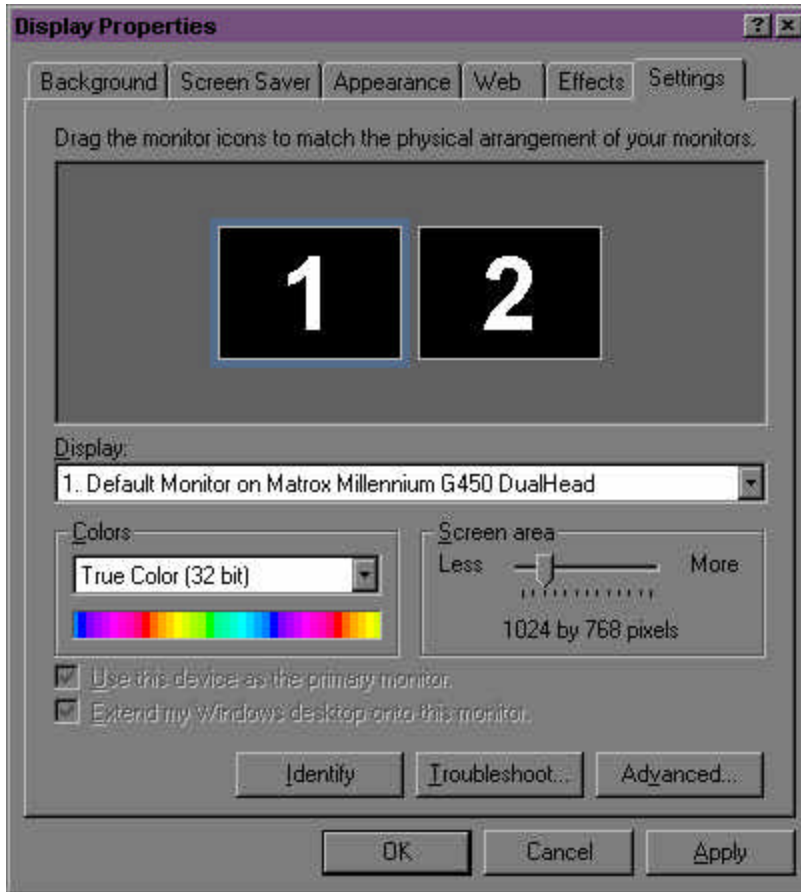
Display Properties window.

4. When the Settings tab is selected the number two monitor should appear by default. Looking in the Display section there should be two choices; the first one should be 1. Default Monitor on Matrox Millennium G450 Dual Head (may be G550 on some systems) and the second one should be 2. Default Monitor on Number Nine Technology Revolution 4.



Monitor 1 Selected.

5. Select the number one monitor by clicking on it.
6. Select both the “Extend my Windows desktop onto this monitor” and the “Use this device as the primary monitor” options.
7. Click on the Apply button. This will move your display to the monitor on your left.
8. Now use your left mouse button and drag the number one monitor over to the left side as shown below.



Monitor 1 on the left.

9. Click on the Apply button.
10. Click on the OK button.

Note: If you wish to identify the monitor you are using or which monitor is which after you have set it up, right click on the monitor in the Display Properties and select Identify. It will temporarily place a large white 1 or 2 on the monitor to identify it.

To insure the monitors are set up correctly, you should be able to move your mouse from the monitor on the left to the monitor on the right by moving the mouse left to right. When working with Avid Xpress or Avid Xpress DV you will place the composer window on the right monitor and the clips or sequences on the left window.