

# Installing ClearID v2.0 F10 -12 Hot Keys

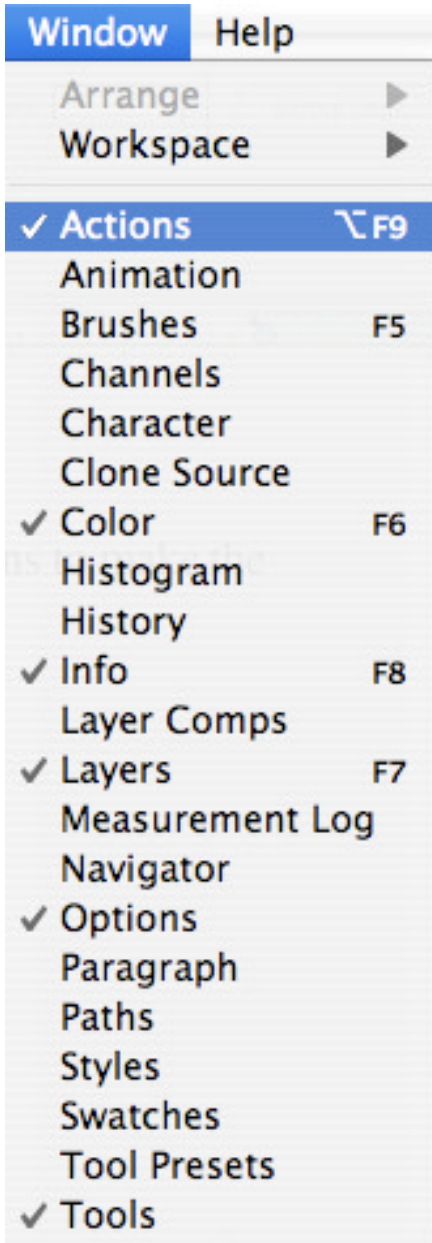
ClearID® 2.0 consists of Photoshop® scripts, plug-ins, online help, and actions to make the workflow operate seamlessly.

## Installing the ClearID F10 Quick Launch Action Feature

After ClearID has been installed, follow these steps to complete the installation

Launch Photoshop CS3 or later†

1. On the menu bar, select Window > Actions to bring up the Actions Palette window:

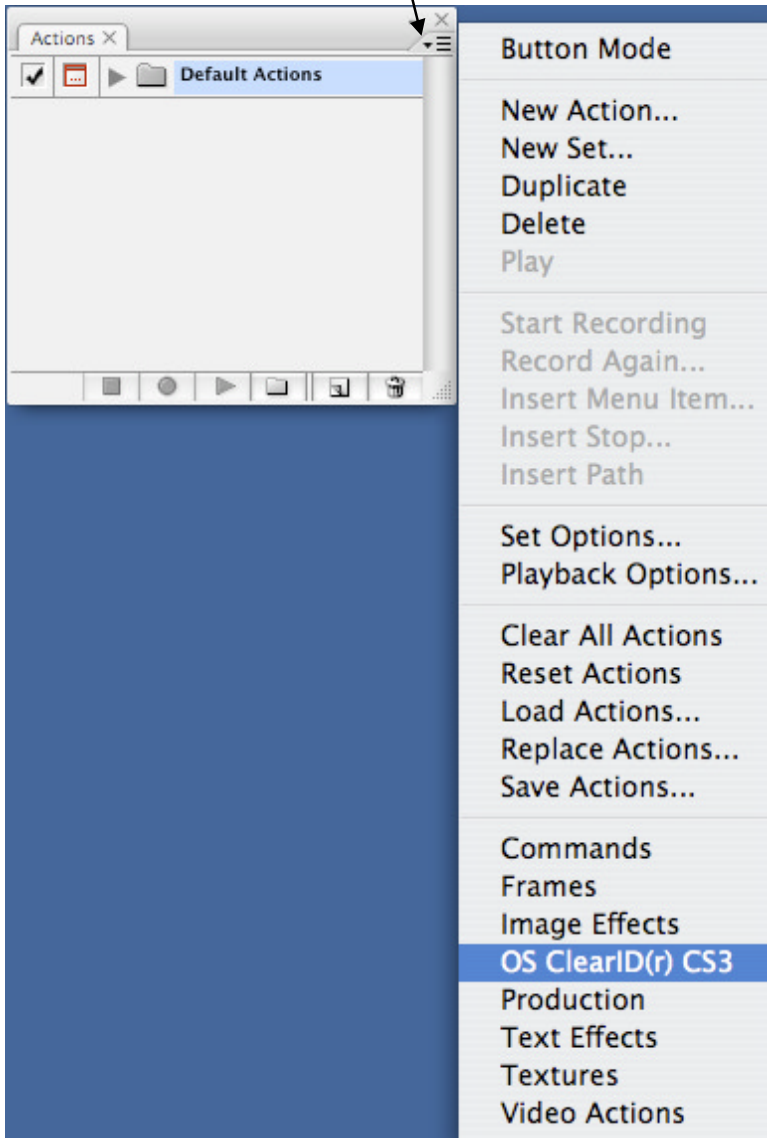


# Installing ClearID v2.0 F10 -12 Hot Keys

3. In the upper right corner of the Actions Palette window, there is a sub-menu icon.

In CS3 and CS4 it looks like . In CS2 it looks like .

4. When you click on it, a popup menu will appear.

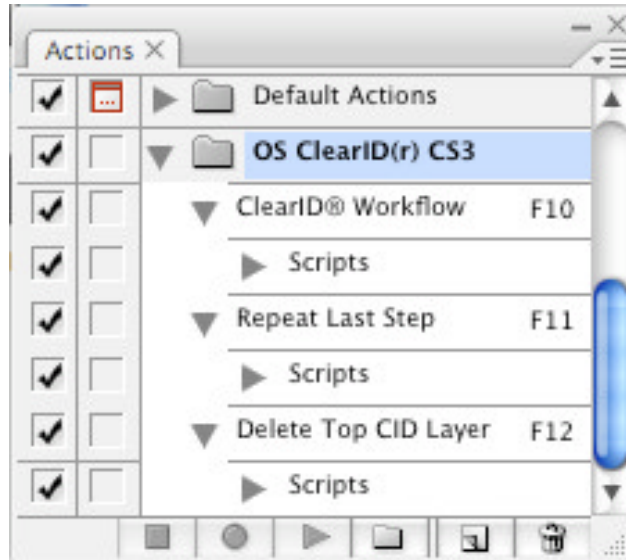


Select the item - OS ClearID(r) ” to load the ClearID F10, F11, and F12 hot key actions.

*Note: If you have previously assigned F10, F11 and F12 keys to other actions, your old actions will still be live. However, if you delete your old actions or remove the F-Key assignments to them you can then repeat the steps above to assign the keys to ClearID.*

## Installing ClearID v2.0 F10 -12 Hot Keys

4. You can verify that the actions (and thus the ClearID hot-keys) are assigned by looking at the actions themselves in the palette. They show F10, F11, and F12 as being assigned to these ClearID functions:



*† All of these steps work for Adobe® Photoshop® CS2 as well. The Photoshop folder name becomes /Adobe Photoshop CS2/ instead for CS2 users*